

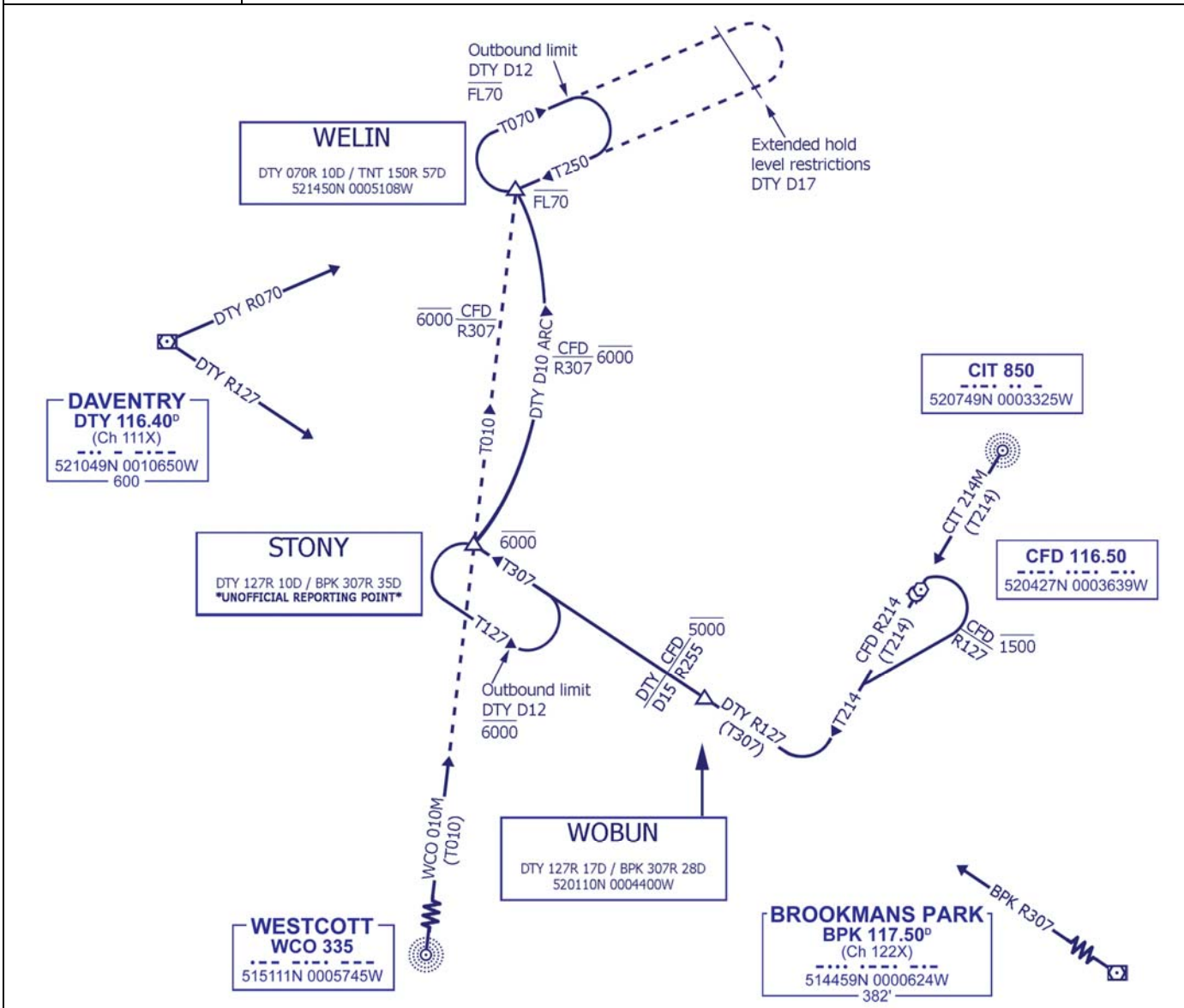


STONY WELIN DEPARTURE ROUTE

Cranfield Airport (EGTC)

 <p>MSA 25NM ARP</p>	CRANFIELD APPROACH 122.850		TRANSITION LEVEL ATC
	CRANFIELD TOWER 134.925		TRANSITION ALTITUDE 6000
	CRANFIELD (D)ATIS 121.875		



STONY WELIN Departure Procedures

STONY WELIN RUNWAY 03

Turn right to establish & maintain the CIT 214M or CFD R214 not above 1500ft until passing the CFD R127. Continue as per STONY WELIN RUNWAY 21

STONY WELIN RUNWAY 21

Establish & maintain CIT 214M or CFD R214. Turn right to intercept and maintain the DTY R127 (TR307M) to STONY (DTY R127 D10). Not above 5000ft on the Cranfield QNH until DTY D15 (BPK D30). Not above 6000ft on the Cranfield QNH at STONY.

From STONY turn right to establish and maintain the DTY D10 ARC to WELIN (DTY R070 D10). Not above 6000ft on the Cranfield QNH until passing the CFD R307. Not above FL70 at WELIN.

If cleared by London Control to be East of DTY FL70 or above (**EXPLICIT ATC CLEARANCE REQUIRED**): extend the WELIN hold to be not above FL70 until passing DTY D17 outbound. Climb to be level FL80 (or cleared level) by DTY D17 inbound, or as directed by London Control.

NOTES:

WARNING - STEPPED CLIMB

Due to the proximity of controlled airspace pilots must ensure strict compliance with specified profiles unless cleared by ATC.

If you do not receive an airways joining clearance prior to departure: once a joining clearance is received from London Control, advise Cranfield Approach on box two with the clearance received and your level passing.